



Dreamgirl[®]

2019 COLLECTION





NEW RELEASES

HANGING LINGERIE 3

SWEET DREAMS SLEEPWEAR 66

NUPTIALS LINGERIE 79

BRAS 95

RED DIAMOND LINGERIE 97

RED DIAMOND FETISH 127

RED DIAMOND BEDROOM COSTUMES 135

WHITE DIAMOND NUPTIALS LINGERIE 147

PACKAGED PANTIES & GARTER BELTS 157

BLACK DIAMOND HOSIERY 165

MOST LOVED

HANGING LINGERIE 52

SWEET DREAMS SLEEPWEAR 73

NUPTIALS LINGERIE 90

BRAS 96

RED DIAMOND LINGERIE 119

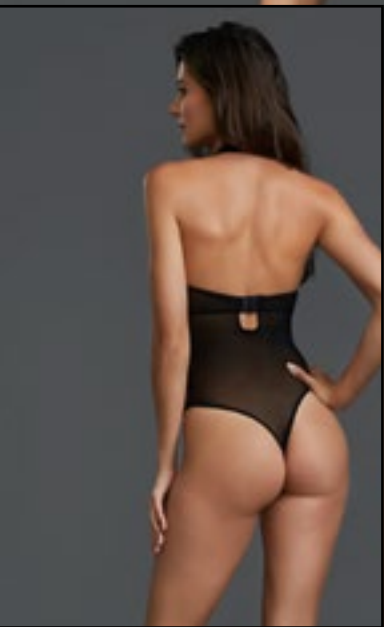
RED DIAMOND FETISH 133

RED DIAMOND BEDROOM COSTUMES 141

WHITE DIAMOND NUPTIALS LINGERIE 151

PACKAGED PANTIES & GARTER BELTS 159

BLACK DIAMOND HOSIERY 177



STYLE 11451 BLACK

XS, S, M, L, XL

- Venice lace high neck, collared teddy • Underwire bra • Faux patent leather waistband, collar and seam details • Stretch mesh thong back with snap crotch



STYLE 11613 BLACK

XS, S, M, L, XL

- Venice lace underwire bra and panty with attached garters • Adjustable straps and back hook and eye closure • Faux patent leather waistband and seam details • Stretch mesh back • Shown with style 0007 thigh highs, sold separately





STYLE 11454X BLACK
1X, 2X, 3X

• Stretch, faux-leather halter bodysuit • Stretch lace trim details • Lace T-back • Thong back with snap crotch • *Plus size has been modified with a higher back for more coverage*



STYLE 11454 BLACK
XS, S, M, L, XL







STYLE 11452 BLACK

S, M, L, XL

- Stretch faux leather and patterned lace crop-top • Underwire, padded bra • Collared neck • Open back with hook and eye closure • Matching high waist skirt • G-string not included







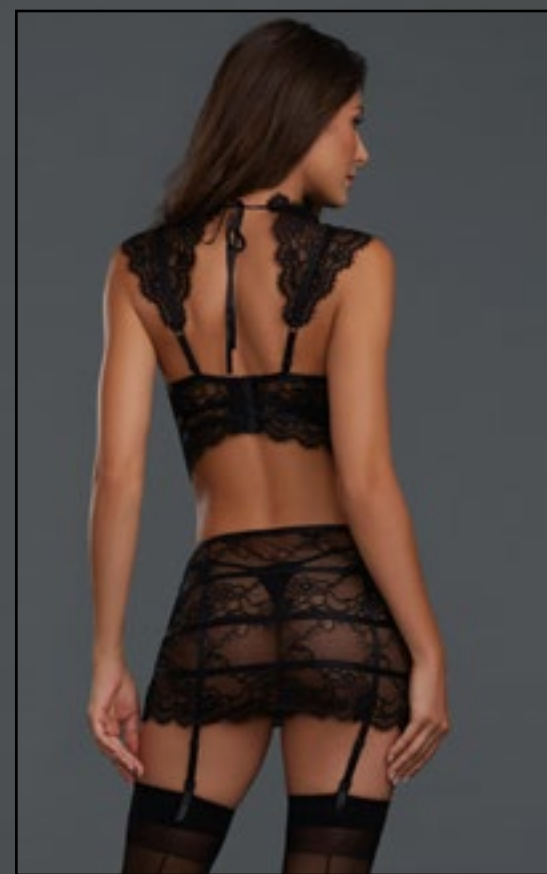
STYLE 11455 BLACK

S, M, L, XL

• 3-piece set • Chiffon cocoon robe with faux-leather piping accent • Faux-leather bralette with keyhole detail • Adjustable shoulder straps • Adjustable hook & eye back closure • Matching faux-leather thong







STYLE 11447 BLACK

XS, S, M, L, XL

- Stretch lace, collared, bustier and garter skirt set
- Underwire, unlined cups
- Elastic strappy details
- Adjustable straps
- Hook and eye back closure
- Garter skirt has strappy details and attached garters
- G-string not included
- Shown with style 0007 thigh highs; sold separately







STYLE 11448X BLACK
1X, 2X, 3X

• Lace and Point d'esprit garter slip • Underwire- molded cups • Metal ring and wide velvet elastic collar and trim • Hook and eye back closure • Attached garters • Plus size comes with detachable straps for extra support • G-string not included • Shown with style 0007 thigh highs, sold separately



STYLE 11448 BLACK
XS, S, M, L, XL







STYLE 11458 BLACK

XS, S, M, L, XL

- Stretch lace garter slip with architectural detailing
- Underwire cups, with boning support
- Removable/adjustable shoulder straps included
- Adjustable hook & eye bra back closure
- Attached/adjustable garters
- Matching thong included
- Shown with style 0007 thigh highs; sold separately





STYLE 11456 BLACK

S, M, L, XL

• Underwire, garter babydoll • Beautiful Venice embroidery lace with satin detailing • Satin halter straps and bra back, both with adjustable hook & eye back closures • Babydoll has removable/adjustable garter straps attached to bottom of bra • Stretch mesh skirt • Matching Venice lace thong included • Shown with style 0007 thigh highs; sold separately





STYLE 11456X BLACK

1X, 2X, 3X

• Underwire, garter babydoll • Beautiful Venice embroidery lace with satin detailing • Satin halter straps and bra back, both with adjustable hook & eye back closures • Babydoll has removable/adjustable garter straps attached to bottom of bra • Stretch mesh skirt • Matching Venice lace thong included • Shown with style 0007X thigh highs; sold separately







STYLE 11460 BLACK

S, M, L, XL

• Sheer mesh and scalloped lace full length gown • Plunge front • Plunge back with lace and stretch satin banding detail • Back slit • G-string included







STYLE 11472X PLUM
1X, 2X, 3X

- Stretch lace and stretch mesh 3-piece gown set • Satin waistband with hidden hook & eye front closure • Matching lace front garter belt; mesh back • Attached/adjustable garter straps • Matching mesh G-string included • Shown with style 0005 thigh highs; sold separately



STYLE 11472 PLUM
S, M, L, XL







STYLE 11542 EGGPLANT

XS, S, M, L, XL

- Baby fishnet and stretch lace garter slip
- Front opening with fixed criss-cross lace-up detail
- Removable garters
- Scalloped lace matching thong included
- Shown with style 0007 thigh highs, sold separately







STYLE 11470X EGGPLANT

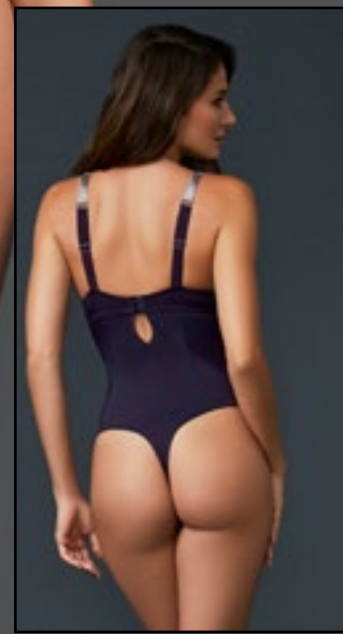
1X, 2X, 3X

- Microfiber bodysuit • Underwire, molded push-up cups • Gunmetal color chainmail shoulder straps, with adjustability in the back • Adjustable hook & eye bra back closure • Thong back with snap crotch



STYLE 11470 EGGPLANT

XS, S, M, L, XL







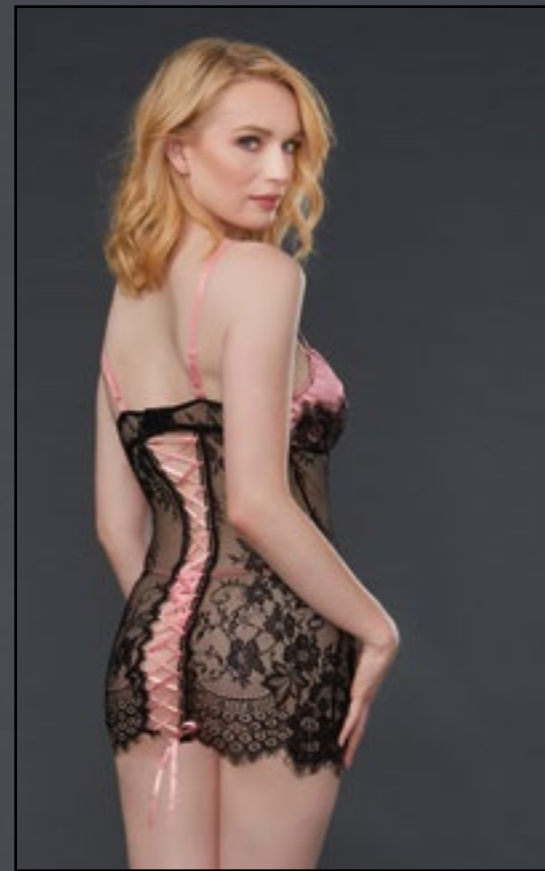
STYLE 11471 BLACK

32, 34, 36, 38

• Microfiber underwire bra • Molded push-up cups • Gunmetal color chainmail shoulder straps, with adjustability in the back • Adjustable hook & eye back closure • Shown with style 1452 G-string; sold separately







STYLE 11272 BLACK/ VINTAGE ROSE

S, M, L, XL

• Eyelash lace underwire chemise • Stretch satin with lace overlay balconette cup • Hidden, inside underwire cup support • Adjustable shoulder straps • Adjustable hook & eye bra back closure • Adjustable ribbon lace-up back detail • Matching stretch satin thong included







STYLE 10537X BLACK/ RED, BLACK/ TEAL, BLACK/ VINTAGE ROSE, WHITE/ POWDER BLUE

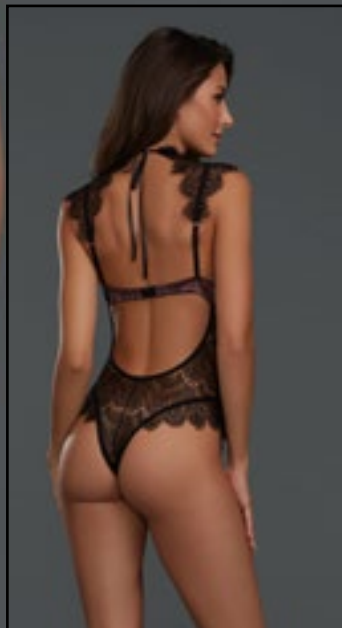
1X, 2X, 3X

- Strappy eyelash lace teddy • Contrast stretch satin lining in front • Underwire cups • Eyelash lace shoulder and collar detail • Collar with ribbon tie in back • Open back with bra hook closure • Snap crotch



STYLE 10537 BLACK/ RED, BLACK/ TEAL, BLACK/ VINTAGE ROSE, WHITE/ POWDER BLUE

XS, S, M, L, XL









STYLE 11464 MIDNIGHT

S, M, L, XL

- Stretch satin and stretch mesh garter slip
- Delicate floral embroidery appliqué details
- Triangle cups
- Adjustable shoulder straps
- Adjustable hook & eye back closure
- Attached/adjustable garter straps
- Matching stretch satin G-string included
- Shown with style 0007 thigh highs; sold separately





STYLE 11465X MIDNIGHT

1X, 2X, 3X

- Babydoll with delicate floral embroidery appliqué
- Stretch satin triangle cups
- Pleated chiffon skirt
- Adjustable shoulder straps
- Adjustable hook & eye back closure
- Matching stretch satin G-string included



STYLE 11465 MIDNIGHT

S, M, L, XL







STYLE 10532X MIDNIGHT, RASPBERRY
1X, 2X, 3X

- Silky satin bias cut cowl neck chemise • Low back with T-strap • Eyelash lace trim • Adjustable straps



STYLE 10532 MIDNIGHT, RASPBERRY
S, M, L, XL





STYLE 11475 RASPBERRY

XS, S, M, L, XL

• Stretch galloon lace chevron style garter slip • Strappy details • Cut-out sides • Adjustable straps • Back hook closure • Removable garters • G-string included





STYLE 11481X RASPBERRY

1X, 2X, 3X

• Dot mesh babydoll with lace trims • Underwire, molded push-up cups • Flirty toga style, open sides • Adjustable shoulder straps • Adjustable hook & eye bra back closure • Matching mesh G-string included • Plus has been modified by removing the push-up cups



STYLE 11481 RASPBERRY

S, M, L, XL







STYLE 11469 RUBY

XS, S, M, L, XL

- Venice embroidery lace cropped bustier • Underwire lace cups • Removable/adjustable shoulder straps • Elastic criss-cross back detail with adjustable hook & eye closures • Matching Venice embroidery lace skirt • Adjustable hook & eye back closure • G-string not included





STYLE 11462 RUBY

S, M, L, XL

- Stretch lace underwire garter slip • Adjustable shoulder straps • Elastic criss-cross back detail • Removable/adjustable garters • Matching lace G-string included • Shown with style 0005 thigh highs; sold separately



STYLE 11462X RUBY

1X, 2X, 3X





STYLE 11543 RUBY

S, M, L, XL

• Baby fishnet and galloon lace chemise • Fixed criss-cross lace up front with back neck hook • Adjustable straps • Lace panty with criss-cross detail in back included





STYLE 11479

LAVENDER

S, M, L, XL

- Lace toga chemise • Galloon lace high cups • Open sides with satin ties • Back neck hook • Adjustable straps • Matching G-string included • Coordinates with style 11490 kimono



STYLE 11490

LAVENDER

S, M, L, XL

- Lace kimono • ¾ length sleeves • Satin inset belt • Inside ties • Satin binding on front opening and sleeves • Coordinates with style 11479 Toga Chemise





STYLE 11479X
1X, 2X, 3X

LAVENDER

- Lace toga chemise • Galloon lace high cups • Open sides with satin ties • Back neck hook • Adjustable straps • Matching G-string included • Coordinates with style 11490X kimono



STYLE 11490X
1X, 2X, 3X

LAVENDER

- Lace kimono • $\frac{3}{4}$ length sleeves • Satin inset belt • Inside ties • Satin binding on front opening and sleeves • Coordinates with style 11479X Toga Chemise







STYLE 11480 PINK CHAMPAGNE

XS, S, M, L, XL

- 3-piece fishnet & lace set • Underwire lace & fishnet bra • Adjustable shoulder straps • Adjustable hook & eye back closure • Matching high-waisted garter skirt with lace and seaming details • Elastic waistband with adjustable hook & loop back closure • Removable/adjustable garters • Matching fishnet G-string included • Shown with style 0007 thigh highs; sold separately





STYLE 11478 PINK CHAMPAGNE

S, M, L, XL

- 3-piece underwire babydoll set • Delicate embroidery and mesh fabrics • Adjustable shoulder straps • Adjustable hook & eye bra back closure • Matching garter belt with embroidery front; mesh back • Attached/adjustable garter straps • Matching mesh G-string included • Shown with style 0007 thigh highs; sold separately



STYLE 11478X PINK CHAMPAGNE

1X, 2X, 3X





STYLE 11482 PINK CHAMPAGNE

S, M, L, XL

- Stretch mesh and lace babydoll • Underwire, molded push-up cups, with lace overlay • Strappy pico elastic neckline detail • Adjustable shoulder straps • Adjustable hook & eye bra back closure • Matching mesh G-string included







STYLE 11483X LIGHT BLUE

1X, 2X, 3X

- Stretch lace & stretch mesh babydoll • Lace triangle cups • Halter styled straps with adjustable hook & loop closure, and adjustable back straps • Lace side slit hem detail • Matching stretch lace panty included



STYLE 11483 LIGHT BLUE

S, M, L, XL





STYLE 11466 LIGHT BLUE

S, M, L, XL

- Striped stretch lace underwire garter slip
- Striped lace is sewn to create a flattering chevron design around the body
- Adjustable shoulder straps
- Adjustable hook & eye back bra closure
- Attached/adjustable garters
- Matching lace G-string included
- Shown with style 0005 thigh highs; sold separately



STYLE 11466X LIGHT BLUE

1X, 2X, 3X



Dreamgirl

MOST LOVED

HANGING LINGERIE





STYLE 10999
XS, S, M, L, XL

BLACK

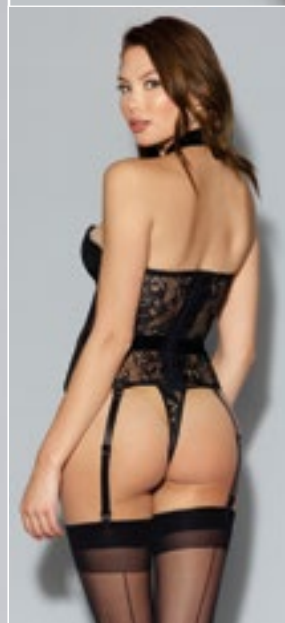
- Sheer, stretch mesh teddy with flocked rose vine motif
- Plunge front halter neckline
- Stretch satin underwire, molded cups
- Adjustable straps
- Thong back with snap crotch
- Hook & eye back closure



STYLE 10999X
1X, 2X, 3X

BLACK

- Sheer, stretch mesh teddy with flocked rose vine motif
- Jewel neckline with keyhole
- Stretch satin underwire, molded cups
- Large back keyhole detail
- Snap crotch closure



STYLE 10928 BLACK
32, 34, 36, 38

- Fully boned lace bustier
- Underwire, molded cups
- Point d'esprit side panels
- Metal ring with velvet elastic trim
- Hook and eye back closure
- Matching thong included
- Style 0007 thigh highs; sold separately





STYLE 10996X BLACK, WHITE

1X, 2X, 3X

• Two-piece set • Mosaic stretch lace teddy • Open G-string back • Adjustable criss-cross straps • Sheer mesh maxi skirt with tie-front closure • Plus garment has been modified with a higher neckline and full lace back for additional coverage

STYLE 10996 BLACK, WHITE

S, M, L, XL





STYLE 10537 BLACK/ RED, BLACK/ TEAL, BLACK/ VINTAGE ROSE, WHITE/POWDER BLUE
XS, S, M, L, XL



STYLE 10537X BLACK/ RED, BLACK/ TEAL, BLACK/ VINTAGE ROSE, WHITE/POWDER BLUE
1X, 2X, 3X

- Strappy, collared eyelash teddy
- Contrast stretch satin lining on cups and front panel
- Underwire cups
- Adjustable straps
- Hook and eye back closure
- Snap crotch closure





STYLE 10095 BLACK
S, M, L, XL

- Delicate lace open-front gown
- Scalloped lace trim
- Long sleeves
- Ribbon-tie front closure
- Matching lace G-string included



STYLE 10457 BLACK
XS, S, M, L, XL

- Venice and mesh chemise
- Adjustable ribbon lace-up detail
- Chemise is versatile and can be worn with embroidery in the front or the back
- Matching stretch mesh G-string included



STYLE 11007 RASPBERRY/BLACK
XS, S, M, L, XL

- Unique 3 piece look lace satin teddy
- Underwire cups
- Attached garter belt and panties with removable garters
- Hook and eye back closures
- Shown with style 0005 high highs; sold separately





STYLE 10992 BLACK

S, M, L, XL

- Unique two-layer garment
- Fishnet halter chemise
- Attached microfiber teddy with plunging neckline
- Hook and eye back closure
- Removable/adjustable garters
- Thong back with snap crotch
- Shown with style 0007 thigh highs; sold separately
- Plus garment has been modified with lower leg and higher back



STYLE 10992X BLACK

1X, 2X, 3X





STYLE 10985 BLACK
XS, S, M, L, XL

- Faux-leather teddy with Venice lace collar and trim
- Underwire, molded cups
- Adjustable collar and straps
- Back hook closure
- Thong back with snap crotch closure



STYLE 10984 BLACK
XS, S, M, L, XL

- Faux-leather garter slip with Venice lace collar and trim
- Underwire, molded cups
- Adjustable collar and straps
- Removable garters
- Shown with style 0007 thigh highs; sold separately



STYLE 10984X BLACK
1X, 2X, 3X

- Faux-leather garter slip with Venice lace collar and trim
- Underwire, molded cups
- Adjustable collar and straps
- Removable garters
- Shown with style 0007X thigh highs; sold separately





STYLE 11014
S, M, L, XL

MIDNIGHT

- Stretch lace and stretch mesh chemise
- Plunging neckline
- Attached delicate draped chains
- Adjustable shoulder straps
- Matching thong included



STYLE 11081X
1X, 2X, 3X

MIDNIGHT

- Stretch lace collared teddy
- Plunging neckline
- Back zipper closure
- Thong back with snap crotch



STYLE 11081
S, M, L, XL

MIDNIGHT

- Stretch lace collared teddy
- Plunging neckline
- Back zipper closure
- Thong back with snap crotch





STYLE 10102 MIDNIGHT
S, M, L, XL

- Delicate, draped fringe chemise
- Halter T-back styling
- Adjustable straps
- Matching mesh G-string included



STYLE 10532
S, M, L, XL

MIDNIGHT, RASPBERRY

- Silky satin bias-cut cowl neck chemise
- Low back with T-back strap
- Eyelash lace trim
- Adjustable straps



STYLE 10532X
1X, 2X, 3X

MIDNIGHT, RASPBERRY

- Silky satin bias-cut cowl neck chemise
- Low back with T-back strap
- Eyelash lace trim
- Adjustable straps





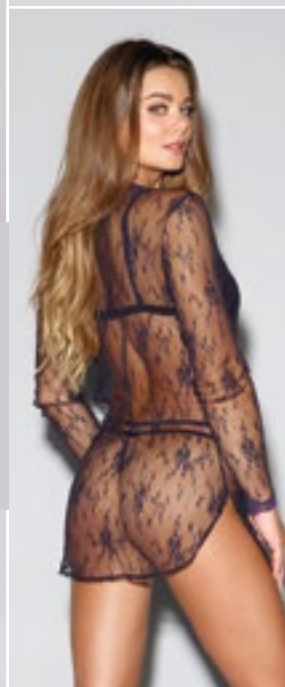
STYLE 11002 PLUM/BLACK
S, M, L, XL

- Three-piece set • Contrast lace overlay detail • Hook and eye front closure
- Fly-away-front mesh skirt • Adjustable shoulder straps • Matching garter belt • Attached/adjustable garters • Matching G-string included • Shown with style 0007 thigh highs; sold separately



STYLE 11002X PLUM/BLACK
1X, 2X, 3X

- Three-piece set • Contrast lace overlay detail • Hook and eye front closure
- Fly-away-front mesh skirt • Adjustable shoulder straps • Matching garter belt • Attached/adjustable garters • Matching G-string included • Shown with style 0007X thigh highs; sold separately



STYLE 11016 EGGPLANT
S, M, L, XL

- Three-piece set • Delicate floral lace shirt-styled robe • Front snap closure
- shirttail hem • Matching bralette and G-string • Adjustable shoulder straps • Back-hook closure





STYLE 10997 PLUM/BLACK
S, M, L, XL

- Three-piece set • Mesh and embroidery trims • Underwire bra • Adjustable shoulder straps • Matching high-waist garter skirt • Hook and eye back closure • Removable/adjustable garters • Matching G-string • Shown with Style 0007 thigh highs; sold separately



STYLE 10998 PLUM/BLACK
S, M, L, XL

- Mesh garter babydoll • Embroidery trims • Underwire Cups • Adjustable shoulder straps • Hook & eye back closure • Removable/adjustable garters attached to bra • Matching G-string • Shown with Style 0007 thigh highs; sold separately



STYLE 10998X PLUM/BLACK
1X, 2X, 3X

- Mesh garter babydoll • Embroidery trims • Underwire Cups • Adjustable shoulder straps • Hook & eye back closure • Removable/adjustable garters attached to bra • Matching G-string • Shown with Style 0007X thigh highs; sold separately



STYLE 11012

DEEP PURPLE, WHITE

32, 34, 36, 38

- Venice lace bustier with front lining • Support boning • Underwire, molded cups • Adjustable satin Euro straps
- Removable/adjustable garters
- Stretch mesh back with zipper closure • Matching G-string included • Shown with style 0007 thigh highs; sold separately



STYLE 11012X

DEEP PURPLE, WHITE

40, 42, 44

- Venice lace bustier with front lining • Support boning • Underwire, molded cups • Adjustable satin Euro straps
- Removable/adjustable garters
- Stretch mesh back with zipper closure • Matching G-string included • Shown with style 0007X thigh highs; sold separately



STYLE 11013

EGGPLANT

XS, S, M, L, XL

- Stretch lace and baby fishnet garter slip • Underwire, molded cups • Strappy collar and details • Adjustable straps • Attached garters
- Cut-out back with hook and eye closure • Matching G-string included • Shown with style 0007 thigh highs; sold separately



STYLE 11013X

EGGPLANT

1X, 2X, 3X

- Stretch lace and baby fishnet garter slip • Underwire, molded cups • Strappy collar and details • Adjustable straps • Attached garters
- Cut-out back with hook and eye closure • Matching G-string included • Shown with style 0007X thigh highs; sold separately





STYLE 10460 GARNET
S, M, L, XL

- Lace halter gown • Scalloped-edge trim • Plunging neckline • High side slit • Low back • Satin waist detail • Adjustable tie-back closures • Matching G-string included



STYLE 11020
S, M, L, XL

MAGENTA, RUBY

- Stretch mesh and lace babydoll • Underwire push-up cups • Stretch satin with lace overlay detail • Matching G-string included

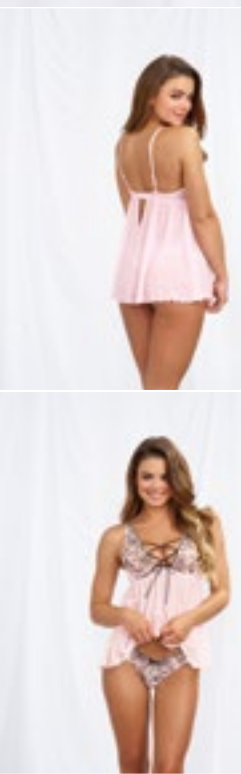


STYLE 11020X
1X, 2X, 3X

MAGENTA, RUBY

- Stretch mesh and lace babydoll • Underwire cups • Stretch satin with lace overlay detail • Matching G-string included





STYLE 11018
S, M, L, XL

VINTAGE PINK

- Underwire cup babydoll • Floral embroidery trim • Adjustable organza ribbon lace-up neckline • Adjustable shoulder straps and hook and eye back closure • Matching embroidered thong included



STYLE 11018X
1X, 2X, 3X

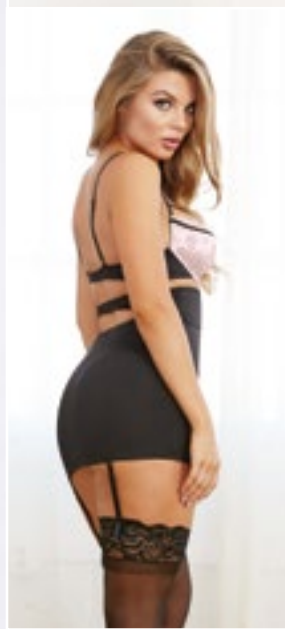
VINTAGE PINK

- Underwire cup babydoll • Floral embroidery trim • Adjustable organza ribbon lace-up neckline • Adjustable shoulder straps and hook and eye back closure • Matching embroidered thong included



STYLE 10497 BLACK/ VINTAGE PINK
S, M, L, XL

- Underwire cup garter slip • Scalloped lace and microfiber • Adjustable shoulder straps • Hook and eye back • Attached high-waisted garter skirt • Removable/adjustable garters • Shown with Style 0005 thigh highs; sold separately





Dreamgirl

SWEET DREAMS

s l e e p w e a r



STYLE 11074 BLACK, MAGENTA, VINTAGE ROSE
S, M, L, XL

- Soft spandex-jersey 2-piece set • Double layer triangle cup bralette • Halter neckline • Lace back detail with adjustable T-back strap • Matching lace back panty included



STYLE 11073 BLACK, PLUM
S, M, L, XL

- Soft spandex-jersey bodysuit • Scoop neckline with racer back • Stretch lace details on hips & back • Thong back with snap crotch







STYLE 11492 DENIM BLUE
XS, S, M, L, XL

- Pointelle rib-knit jersey bodysuit • Grommet & adjustable lace-up neckline
- Halter straps with lace-up back, racer design • Cheeky back fit with snap crotch



STYLE 11491 DENIM BLUE
S, M, L, XL

- Pointelle rib-knit jersey chemise • Grommet & adjustable lace-up neckline • Side slit hem
- Adjustable shoulder straps







STYLE 9703

RED/BLACK

S, M, L, XL

- Soft spandex-jersey chemise
- Lace inset details on neckline and back
- Adjustable criss-cross straps



STYLE 11495

RED/BLACK

S, M, L, XL

- Soft, spandex-jersey robe
- Lace trim details
- Self-belt included
- Pairs well with style 9703 chemise, sold separately





STYLE 9703X
1X, 2X, 3X

RED/BLACK

- Soft spandex-jersey chemise
- Lace inset details on neckline and back
- Adjustable criss-cross straps
- *Plus size has been modified with a higher back for more coverage*



STYLE 11495X
1X, 2X, 3X

RED/BLACK

- Soft, spandex-jersey robe
- Lace trim details
- Self-belt included
- Pairs well with style 9703 chemise, sold separately





STYLE 11068

RASPBERRY

S, M, L, XL

- Soft, spandex-jersey chemise • Scalloped lace edging • Adjustable criss-cross back straps

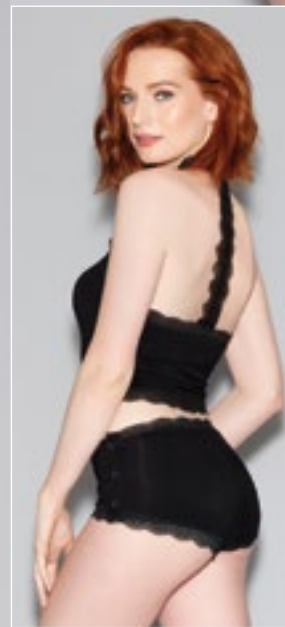


STYLE 11068X

RASPBERRY

1X, 2X, 3X

- Soft, spandex-jersey chemise • Scalloped lace edging • Adjustable criss-cross back straps



STYLE 11071 BLACK

S, M, L, XL

- Soft, spandex-jersey pajama set • Camisole features scalloped lace edging • Functioning snap-front closure • Lace T-back strap • Matching panty features functioning snap-side closures





STYLE 11497X BLACK, WHITE
1X, 2X, 3X

- Satin charmeuse robe • Lace trim details • In-set belt, with adjustable front tie closure



STYLE 11497 BLACK, WHITE
S, M, L, XL





STYLE 8740

BLACK

S, M, L, XL

- Chiffon and stretch lace short kimono robe • 3/4 length sleeves • attached chiffon sash • Matching stretch lace cheeky panty included



STYLE 8740X

BLACK

1X/2X, 3X/4X

- Chiffon and stretch lace short kimono robe • 3/4 length sleeves • attached chiffon sash • Matching stretch lace cheeky panty included



STYLE 3863 BLACK

S, M, L, XL, XXL

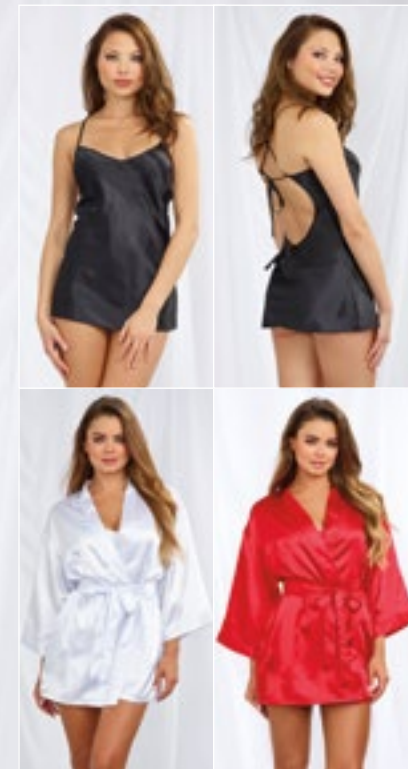
- Men's charmeuse lounge pant • Drawstring waist





STYLE 10976 BLACK
M, L, XL, XXL

• Men's charmeuse lounge boxer • Side pocket • Elastic waistband • Pair with Women's Style 3717 robe; sold separately



STYLE 3717 BLACK, RED, WHITE
S, M, L

• Women's charmeuse kimono robe • Attached belt • Includes matching chemise • Adjustable criss-cross straps • Low back • Matching padded lingerie hanger included



STYLE 3717X BLACK, RED, WHITE
1X/2X, 3X/4X

• Women's charmeuse kimono robe • Attached belt • Includes matching chemise • Adjustable criss-cross straps • Low back • Matching padded lingerie hanger included





STYLE 11078
S, M, L, XL

BLACK, WHITE

- Delicate long-sleeved lace kimono robe • Eyelash lace trim • Wide sleeves • Attached satin belt • G-string not included



STYLE 11078X
WHOLESALE \$18.95, MSRP \$40.00

BLACK, WHITE

- Delicate long-sleeved lace kimono robe • Eyelash lace trim • Wide sleeves • Attached satin belt • G-string not included



STYLE 4820 WHITE
S, M, L

- Three-piece chiffon robe set • Robe features shirt styling with collar • French cuffs • Shirttail hem • Bralette features adjustable halter ties • Back hook closure • Matching thong and padded lingerie hanger included





Dreamgirl

NUPTIALS





STYLE 11499 WHITE

S, M, L, XL

- 3-piece garter skirt set • Lace balconette bra with boning details • Hidden, inside underwire cup support
- Removeable/adjustable shoulder straps • Adjustable hook & eye bra back closure • Lace high-waisted garter skirt with large heart cut-out detail on back • Elastic waistband with adjustable hook & loop side closure
- Attached/adjustable garter straps • Matching lace G-string included • Shown with style 0007 thigh highs; sold separately



STYLE 11498 WHITE

S, M, L, XL

- High neck lace babydoll with stretch galloon lace bra cups and back treatment
- Sheer mesh "illusion" inset • Back hook closure • Matching G-string included







STYLE 10537X BLACK/RED, BLACK/ TEAL, BLACK/ VINTAGE ROSE,
WHITE/ POWDER BLUE

1X, 2X, 3X

• Strappy, collared eyelash teddy • Contrast stretch satin lining on cups and front panel • Underwire cups • Adjustable straps • Hook and eye back closure • Snap crotch closure



STYLE 10537 BLACK/RED, BLACK/ TEAL, BLACK/ VINTAGE ROSE
WHITE/ POWDER BLUE

XS, S, M, L, XL





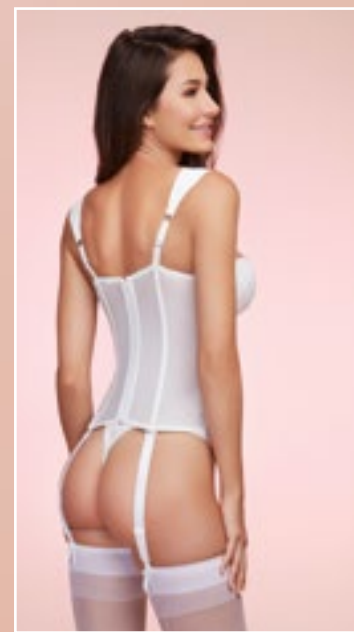


STYLE 11012X DEEP PURPLE, WHITE
40, 42, 44

- Venice lace bustier with front lining • Support boning • Underwire, molded cups • Adjustable satin Euro-straps • Removable/adjustable garters
- Stretch mesh back with zipper closure • Matching G-string included • Shown with style 0007 thigh highs; sold separately



STYLE 11012 DEEP PURPLE, WHITE
32, 34, 36, 38









STYLE 11501 WHITE

S, M, L, XL

- Soft spandex-jersey bodysuit • Metallic sequin lettering appliqué detail • Scoop neckline with racer back
- Stretch lace details on hips & back • Thong back with snap crotch



STYLE 11501X WHITE

1X, 2X, 3X





STYLE 11500 WHITE

S, M, L, XL

• Soft, spandex-jersey chemise • Metallic & glitter screen-print detail • Large cut-out heart detail on back • Adjustable shoulder straps • Side slit hem





STYLE 11292 WHITE

S, M, L, XL

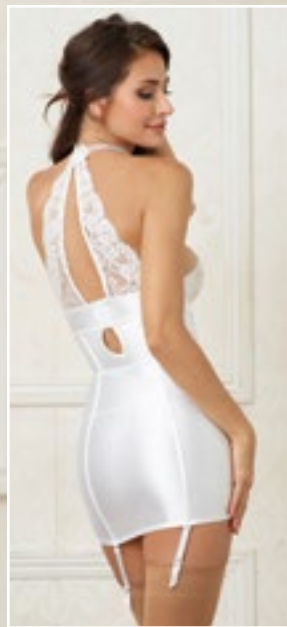
- Satin charmeuse Bride robe • Attached, set-in belt; adjustable front tie closure • Metallic Bride screen-print detail



STYLE 11292X WHITE

1X, 2X, 3X





STYLE 11023 WHITE

XS, S, M, L, XL

- Stretch satin and galloon lace garter slip
- Attached faux-pearl collar
- Underwire-molded nude illusion cups
- Seam detailing
- Attached/adjustable garters
- Galloon lace back
- Keyhole detail
- Adjustable back & neck closures
- Shown with Style 0007 thigh highs; sold separately
- G-string not included



STYLE 11025 WHITE

XS, S, M, L, XL

- Eyelash lace halter teddy
- High tie-neck closure
- Low back
- Eyelash lace framing
- Snap crotch





STYLE 11078 BLACK, WHITE

S, M, L, XL

- Delicate, long-sleeved lace kimono robe • Eyelash lace trim • Wide sleeves • Attached satin belt • G-string not included



STYLE 11078X BLACK, WHITE

1X, 2X, 3X





STYLE 10996X BLACK, WHITE
1X, 2X, 3X

- Two-piece set • Mosaic stretch lace teddy • Open G-string back • Adjustable criss-cross straps • Sheer mesh maxi skirt with tie-front closure
- Plus garment has been modified with a higher neckline and full lace back for additional coverage



STYLE 10996 BLACK, WHITE
S, M, L, XL





STYLE 11497 BLACK, WHITE

S, M, L, XL

- Satin charmeuse robe • Lace trim details • In-set belt, with adjustable front tie closure



STYLE 11497X BLACK, WHITE

1X, 2X, 3X



A woman with long, wavy brown hair is shown from the waist up, looking down and to the right. She is wearing a white lace bra and matching white lace underwear. She is also wearing a white, long-sleeved, open-front robe with lace trim along the edges. She is standing in front of a window with white curtains, which she is holding slightly open with her left hand. The lighting is soft and natural, coming from the window.

Dreamgirl

BRAS



STYLE 9386
32, 34, 36, 38

BLACK, RED, WHITE

- Stretch lace, open-cup underwire shelf bra • Adjustable shoulder straps • Hook and eye back closure • Shown with styles 8735 garter belt, 1376 thong and 0005 thigh highs; sold separately • Pasties not included



STYLE 9386X
40, 42, 44

BLACK, RED, WHITE

- Stretch lace, open-cup underwire shelf bra • Adjustable shoulder straps • Hook and eye back closure • Shown with styles 8735X garter belt, 1376X thong and 0005X thigh highs; sold separately • Pasties not included



STYLE 11539 BLACK
32, 34, 36, 38

- Stretch lace underwire bra with strappy detail • Adjustable shoulder straps • Adjustable hook & eye bra back closure • Shown with style 1450 panty; sold separately





STYLE 11471 BLACK,
32, 34, 36, 38

• Microfiber underwire bra • Molded push-up cups • Gunmetal color chainmail shoulder straps, with adjustability in the back • Adjustable hook & eye back closure • Shown with style 1452 G-string; sold separately



STYLE 9384
32, 34, 36, 38

BLACK

• Stretch lace, open-cup underwire shelf bra with vinyl "X" design • Adjustable shoulder straps • Hook & eye back closure • Shown with Style 9382 garter belt; sold separately • Pasties and G-string not included



STYLE 9385
32, 34, 36, 38

BLACK

• Satin open-cup underwire shelf bra • Zig-zag topstitch detailing • Stretch mesh back • Adjustable shoulder straps • Hook & eye back closure • Shown with 9382 garter belt; sold separately • Pasties and G-string not included





Dreamgirl

RED DIAMOND

packaged lingerie





STYLE 11511 SPARKLING GRAPE
O/S

- Stretch lace teddy • Strappy elastic details • Adjustable shoulder straps • Open back with adjustable elastics straps • G-string back



STYLE 11511X SPARKLING GRAPE
O/S QUEEN

- Stretch lace teddy • Strappy elastic details • Adjustable shoulder straps • Open back with adjustable elastics straps • G-string back





STYLE 11517X PLUM

O/S QUEEN

- Stretch mesh chemise with shirring details
- Halter neckline with adjustable T-back strap
- Front zipper detail



STYLE 11517 PLUM

O/S

- Matching mesh





STYLE 11507 EGGPLANT

O/S

- Seamless fishnet 3-piece set • Strapless bandeau bralette • Garter skirt with attached/adjustable garters • Matching elbow length gloves • Shown with style 0007 thigh highs; sold separately • G-string not included



STYLE 11506 MIDNIGHT

O/S

- Stretch lace, short length garter slip • Plunging neckline with adjustable halter ties • Adjustable elastic waistband • Attached/adjustable garters • Matching strappy stretch lace panty • Shown with style 0007 thigh highs; sold separately



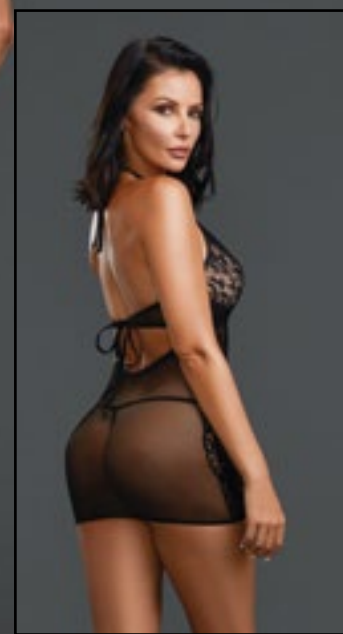


STYLE 11515X BLACK
O/S QUEEN

- Baby fishnet and lace halter chemise • Tie neck and back closures • G-string included



STYLE 11515 BLACK
O/S







STYLE 11287 BLACK

O/S

• Seamless bodysuit with multi-patterned stripe details • Cold-shoulder styling with long sleeves • Halter neck with adjustable ties • Thong back with snap crotch







STYLE 11509 BLACK

O/S

- Strappy teddy with stretch galloon lace • Adjustable straps and back • Tie back collar • Thong back





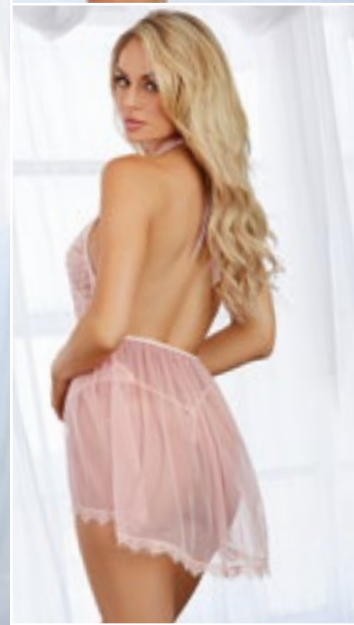


STYLE 11513X PINK CHAMPAGNE
O/S QUEEN

- Halter plunge front stretch lace teddy • Attached, fly-a-way hi-lo skirt • Eyelash lace trim • Organza ribbon tie at neck • G-string back



STYLE 11513 PINK CHAMPAGNE
O/S







STYLE 11508 VINTAGE ROSE

O/S

- Stretch lace underwire bralette • High-neck halter styling with tie-back neck and adjustable hook & eye back closures • Matching high-waisted stretch lace panty • Adjustable elastic waistband • Removable/adjustable garters • Shown with style 0007 thigh highs; sold separately







STYLE 11512 LIGHT BLUE
O/S

- Stretch Baby fishnet and Lace Teddy
- Lace and strappy detailed back
- Snap crotch



STYLE 10564 LAVENDER, MIDNIGHT
O/S

- Stretch lace halter bralette
- High-neck styling with tie-back neck closure
- Strappy, high-waisted lace panty







STYLE 11516 RASPBERRY
O/S

- Stretch mesh and lace Peek-a-boo Cup Chemise • Elastic faux lace-up • Adjustable straps • U-back with tie closure • G-string Included



STYLE 11560 RASPBERRY
O/S

- 3 Pc set • Stretch galloon lace strappy bralette with adjustable straps • Stretch mesh skirt with lace waistband • Matching G-string included







STYLE 11518X RUBY
O/S QUEEN

• Stretch lace & stretch mesh garter slip • Adjustable shoulder straps • Attached/adjustable garters • Matching mesh G-string included • Shown with style 0007 thigh highs; sold separately



STYLE 11518 RUBY
O/S





STYLE 11503 MIDNIGHT

O/S

- Stretch lace & mesh babydoll • High-neck halter styling with tie-back neck closure • Matching strappy stretch lace panty



STYLE 11503X MIDNIGHT

O/S QUEEN





STYLE 11504X PLUM

O/S QUEEN

- Stretch mesh Babydoll • Off the shoulder, capped sleeve, stretch lace bodice



STYLE 11504 PLUM

O/S

- Ruched in front • G-string and collar included



A photograph of a woman's back and waist. She is wearing a red lace thong with a small red bow at the back. Her hands are on her hips, and she is wearing blue denim jeans. The background is plain white.

Dreamgirl
MOST LOVED
red diamond



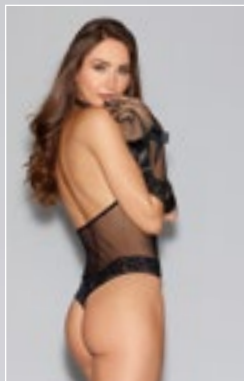
STYLE 8694 BLACK, RED, WHITE
O/S

- Stretch lace halter teddy • Plunging neckline • Adjustable halter ties • Large heart cut-out detail on back



STYLE 8694X BLACK, RED, WHITE
O/S QUEEN

- Stretch lace halter teddy • Plunging neckline • Adjustable halter ties • Large heart cut-out detail on back • Plus size garment modified with higher neckline



STYLE 11040 BLACK
O/S

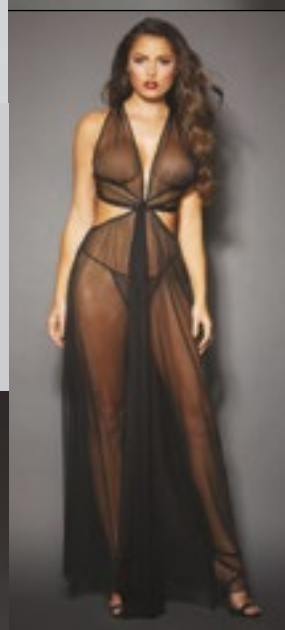
- Seamless fishnet collared teddy • Plunge-front halter neckline • Tie-neck closure • Lace trim • G-string back • Includes matching fishnet gloves with ribbon-tie restraint





STYLE 11029 BLACK
O/S

- Two-piece set • Seamless, mosaic stretch lace bralette • Halter neck • Matching high-waist skirt • Back keyhole detail • Ribbon-tie closures • G-string not included



STYLE 10593 BLACK
O/S

- Sheer mesh Grecian-style gown • Floor-length hem • Plunging neckline • All-over shirring • Cut-out sides • Open back with criss-cross strap details • Versatile front panel can be worn loose or as an extra wrap • Matching G-string included



STYLE 10562 BLACK
O/S

- Three piece set • Stretch fishnet crop top • Thumb holes at sleeve hem • Fishnet garter belt with wide elastic waistband • Attached adjustable garters • Matching G-string included • Shown with style 0007 high-highs not included • Pasties not included





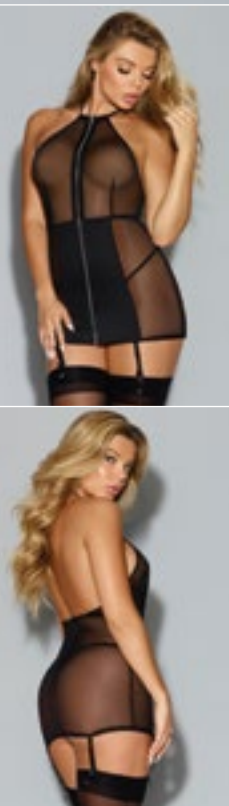
STYLE 11037 BLACK
O/S

- Three-piece fishnet garter set • Unlined halter bralette • Criss-cross adjustable neckline • Large center keyhole • Criss-cross waistline garter belt • Silver ring details and adjustable back closures • Matching G-string included • Shown with style 0007 thigh highs; sold separately



STYLE 10572 BLACK
O/S

- Stretch mesh and microfiber garter slip • Tie back halter neckline • Functioning front-zipper detail • Removable/adjustable garters • Shown with style 0007 thigh highs; sold separately • Thong not included



STYLE 10572X BLACK
O/S QUEEN

- Stretch mesh and microfiber garter slip • Tie back halter neckline • Functioning front-zipper detail • Removable/adjustable garters • Shown with style 0007X thigh highs; sold separately • Thong not included



STYLE 11027

BLACK

O/S

- Seamless, stretch lace collared chemise • Plunge front neckline • Racer back with functioning zipper detail • G-string not included

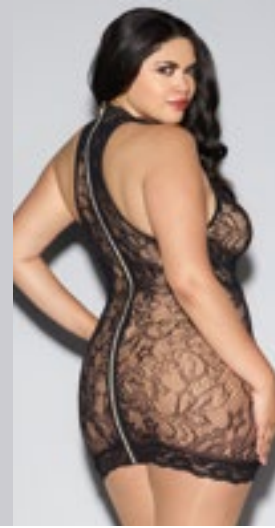


STYLE 11027X

BLACK

O/S QUEEN

- Seamless, stretch lace collared chemise • Plunge front neckline • Racer back with functioning zipper detail • G-string not included



STYLE 11034

BLACK

O/S

- Strappy, stretch galloon lace and mesh babydoll • High neckline • Unlined cups • Ring detail • Eyelash lace trim • Matching G-string included



STYLE 11034X

BLACK

O/S QUEEN

- Strappy, stretch galloon lace and mesh babydoll • High neckline • Unlined cups • Ring detail • Eyelash lace trim • Matching G-string included





STYLE 10561X LIPSTICK RED
O/S QUEEN

• Scalloped, stretch, galloon lace bustier • Underwire open cups • Adjustable shoulder straps • Strappy back detail • Attached/adjustable garters • Matching open-crotch G-string included • Shown with style 0005 thigh highs; sold separately • *Plus has been modified with a mesh back for more coverage*



STYLE 10561 LIPSTICK RED
O/S





STYLE 10551 GARNET
O/S

- Stretch galloon lace teddy • Unlined triangle cups • Peek-a-boo cutouts • Open crotch • Criss-cross adjustable straps • G-string back



STYLE 11032 GARNET
O/S

- Stretch lace and stretch mesh babydoll with scalloped lace • Neckline detail and adjustable halter & shoulder straps • Matching lace tanga panty included



STYLE 10552 GARNET
O/S

- Two-piece, strappy garter play set • Unlined lace bra • Decorative rings • Adjustable shoulder & back straps • Back hook closures • Attached/adjustable garters • Matching thong included • Shown with style 0007 thigh highs; sold separately





STYLE 10564 MIDNIGHT, LAVENDER
O/S

- Two-piece bralette set • Scalloped, stretch galloon lace bralette • Highneck halter and tie-back closure • Matching strappy stretch lace panty included



STYLE 11028 EGGPLANT
O/S

- Stretch lace garter slip with unlined cups • Scalloped lace trim • Attached garters • Low, strappy T-back • Strappy neckline • Adjustable collar and ring detail • Shown with style 0007 high highs; sold separately • G-string not included



STYLE 11033 RASPBERRY/BLACK
O/S

- Stretch mesh babydoll with cutout midsection • Contrast lace overlay • Contrast elastic detailing • Adjustable shoulder & halter straps • Matching lace G-string included



Dreamgirl

FETISH

diamond







STYLE 11526 BLACK
O/S

- Leather-look knit collared chemise • Metal ring and stud details • Removable chain wrist restraints • Elastic strappy back • Velcro closure on collar • Thong not included



STYLE 11526X BLACK
O/S QUEEN





STYLE 11525 BLACK

O/S

• Faux-leather open cup teddy • Halter neck with adjustable hook & eye back closure • Harness strapping detail with metal rings and studs • Elastic criss-cross, G-string back • Removable chain leash included • Pasties not included





STYLE 11536 BLACK

O/S

• Leather-look open-cup harness bra with metal rings and studs • Lace-up tie back closure • Open-back spanking skirt with lace-up tie closures • Faux leather toy "spanker" included • G-string and pasties not included



STYLE 11536X BLACK

O/S QUEEN





STYLE 11540 BLACK

O/S

• Leather-look knit and elastic collared harness teddy • Metal rings and chain detail • Attached wrist restraints in back • Adjustable back straps • Pasties included



STYLE 11537 BLACK

O/S

• Collared elastic strappy teddy • Metal ring detail • Faux leather leash included





STYLE 10575 BLACK

O/S

- Fishnet halter teddy • Neckline stud details • Open G-string back with functioning clasp detail • Includes matching studded wrist restraints with elastic opening and functioning clasp



STYLE 11053 BLACK

O/S

- Stretch fishnet and elastic teddy • Strappy collared neckline • Silver rings and stud details • Strappy open back





STYLE 10559 BLACK

O/S

- Stretch mesh and elastic bustier • Strappy high-neck • Silver ring, and stud details • Attached garters • Strappy elastic back with adjustable hook closures
- Matching G-string included • Shown with style 0007 thigh highs; sold separately



STYLE 9156 BLACK

O/S

- Faux leather knit halter dress • Open cups • Adjustable neck ties • Open back • Elastic "X" details with silver rings • Matching thong, choker, and wrist-restraints included



Dreamgirl

BEDROOM
c o s t u m e s



STYLE 11532X "MADE ME DIRTY"

O/S QUEEN

- Maid-themed stretch mesh chemise • Collar and sleeves with ruffled lace details • Includes matching apron with screen-printed "Dirty"
- G-string not included



STYLE 11532 "MADE ME DIRTY"

O/S





STYLE 11531 "OFFICE AFFAIR"

O/S

• Office-themed pinstripe knit teddy • Double-breasted styling with lace neckline detail • Solid back with adjustable waist belt • Thong back with snap crotch closure • Attached/adjustable garters • Includes matching collar & tie with Velcro closure and toy glasses • Shown with style 0007 thigh highs; sold separately



STYLE 11531X "OFFICE AFFAIR"

O/S QUEEN





STYLE 11530X "NURSE NAUGHTY"
O/S QUEEN

• Nurse-themed stretch knit teddy • Halter neckline with collar detail and adjustable neck ties • Functional zipper detail, that zips from front-to-back • Thong back • Attached elastic garters • Includes matching nurse's cap with patch detail and toy stethoscope • Shown with style 0007 thigh highs; sold separately



STYLE 11530 "NURSE NAUGHTY"
O/S





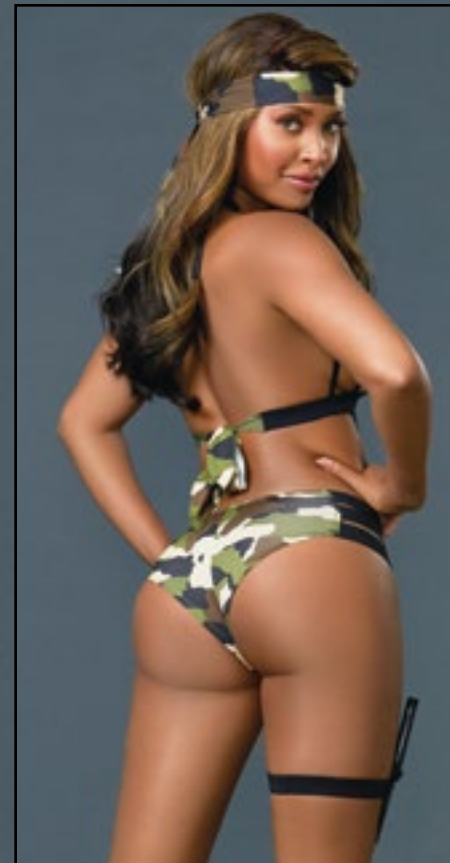
STYLE 11527 "SWAT ME"
O/S



STYLE 11527X "SWAT ME"
O/S QUEEN

- Knit zip front vest with S.W.A.T. patch
- Elastic back and tie back neck closure
- Knit cheeky panty with elastic sides and SWAT screen print on butt
- Toy handcuffs included





STYLE 11529 "CAMO CUTIE"

O/S

• Camouflage printed knit teddy • Elastic strappy details • Ties at back neck and back • Removable toy bullets • Headband, toy knife and garter-style holder included





STYLE 9766 "MAID TO TEASE"
O/S

- Lace apron with ruffle details • Attached elastic garters • Adjustable criss-cross back straps and ribbon waist tie • Matching lace G-string, maid cap, neck ribbon and feather tickler included • Shown with style 0005 thigh highs; sold separately



STYLE 9766X "MAID TO TEASE"
O/S QUEEN

- Lace apron with ruffle details • Attached elastic garters • Adjustable criss-cross back straps and ribbon waist tie • Matching lace G-string, maid cap, neck ribbon and feather tickler included • Shown with style 0005X thigh highs; sold separately



STYLE 10590 "FRENCH MAID FANTASY"
O/S

- Stretch knit, underwire teddy with ruffled lace details • Adjustable shoulder straps • Open crotch • Maid cap • Ribbon neck choker • Apron with "Dirty" embroidery • Attached/adjustable garters • Shown with style 0005 thigh highs; sold separately





STYLE 9774 "TRIAGE TRIXIE"
O/S

• Stretch jersey and stretch mesh short-sleeved garter slip • Contrast piping, lace-up ribbon front • Contrast back ruffles • Attached/adjustable garter straps • Matching G-string and nurse cap included • Shown with style 0007 thigh highs; sold separately



STYLE 11051 "ER HOTTIE"
O/S

• Nurse-themed, stretch mesh chemise with short sleeves • Functioning front zipper • Shirt collar detail • Includes tie-on nurse hat and novelty stethoscope • G-string not included



STYLE 11051X "ER HOTTIE"
O/S QUEEN

• Nurse-themed, stretch mesh chemise with short sleeves • Functioning front zipper • Shirt collar detail • Includes tie-on nurse hat and novelty stethoscope • G-string not included





STYLE 8014 "WORKING LATE"

O/S

• Pinstriped, stretch knit vest-style garter slip • Attached sheer chiffon shirt collar and lapel • Faux double-breasted button detail • Ruffled back hem and functional back buckle • Matching thong and plastic glasses included • Shown with style 0007 thigh highs; sold separately



STYLE 8014X "WORKING LATE"

O/S QUEEN





STYLE 11046X
"HOMEROOM HOTTIE"

O/S QUEEN

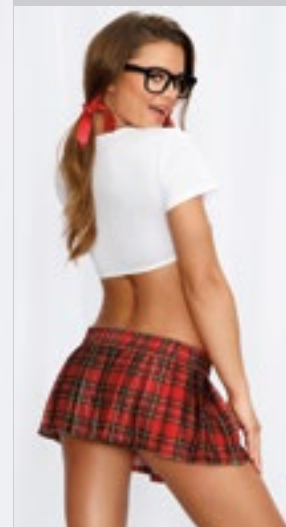
- Two-piece schoolgirl-themed set • Knit crop top features lace neckline detail and tie-front closure • Pleated mini skirt features plaid print and side slit detail • Matching hair ribbons and novelty glasses included



STYLE 11046
"HOMEROOM HOTTIE"

O/S

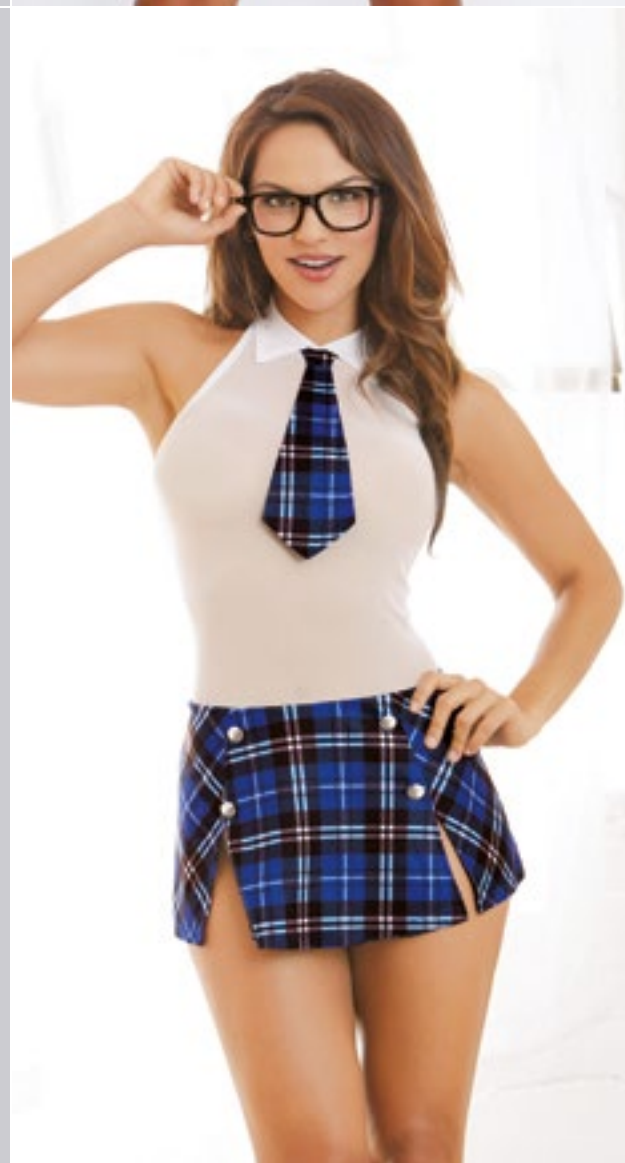
- Two-piece schoolgirl-themed set • Knit crop top features lace neckline detail and tie-front closure • Pleated mini skirt features plaid print and side slit detail • Matching hair ribbons and novelty glasses included



STYLE 10602X
"SCHOOLGIRL TEASE"

O/S QUEEN

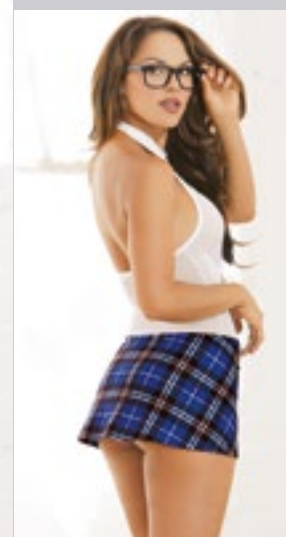
- Stretch mesh, schoolgirl-themed chemise with collared halter neckline, attached • Plaid tie, back velcro closure • Attached plaid skirt with slit details • Novelty glasses included.



STYLE 10602
"SCHOOLGIRL TEASE"

O/S

- Stretch mesh, schoolgirl-themed chemise with collared halter neckline, attached • Plaid tie, back velcro closure • Attached plaid skirt with slit details • Novelty glasses included.





STYLE 10168 "EXTRA-CURRICULAR CUTIE"
O/S

- Stretch mesh halter crop top with attached collar, tie detail • Velcro neck closure • Matching plaid miniskirt with button and slit details • Ruler paddle with "Enjoy Every Inch" screen print and plastic novelty glasses included.



STYLE 10168X "EXTRA-CURRICULAR CUTIE"
O/S QUEEN

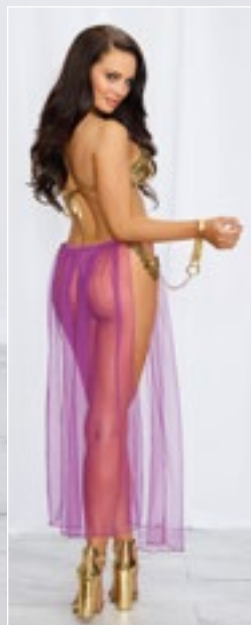
- Stretch mesh halter crop top with attached collar, tie detail • Velcro neck closure • Matching plaid miniskirt with button and slit details • Ruler paddle with "Enjoy Every Inch" screen print and plastic novelty glasses included.



STYLE 9767 "NERDY TALK"
O/S

- Stretch knit cropped tank top with "Talk nerdy to me" screen print • Pleated plaid skirt • Matching suspenders and thong • Plaid bowtie and plastic glasses included





STYLE 9320 "HAREM SLAVE"
O/S

• Three-piece set • Gold lamé halter bra features gold coin trim and adjustable back ties • Matching thong features attached long mesh skirt with open sides and coin trim detail • Matching neck collar with chain leash included



STYLE 8680 "TEACHER'S PET"
O/S

• Two-piece set • Strapless vest-look knit top features crest patch, decorative gold buttons and back tie closure • Pleated plaid skirt features decorative button tab detail • Matching thong and neck tie included



STYLE 10588 "BOOTY CAMP"
O/S

• Two-piece, Army-themed set • Stretch mesh crop top features camouflage print and tie-front closure; matching mini skirt features • Attached/adjustable garters • Dog tag necklace included • Shown with style 0007 thigh highs; sold separately • Thong not included



Dreamgirl

W H I T E

d i a m o n d



STYLE 11290X WHITE
O/S QUEEN

• Stretch lace and stretch mesh garter slip • Side seam hem shirring detail • Peek-a-boo back with veil detail • Adjustable shoulder straps & tie back closure • Attached/adjustable garters • Shown with style 0007 thigh highs; sold separately



STYLE 11290 WHITE
O/S





STYLE 11521 WHITE

O/S

• Lace halter babydoll with metallic pico elastic details • Adjustable tie-back closures • Matching lace g-string with attached, front-only elastic garters • Shown with Style 0007 thigh highs; sold separately



STYLE 11521X WHITE

O/S QUEEN





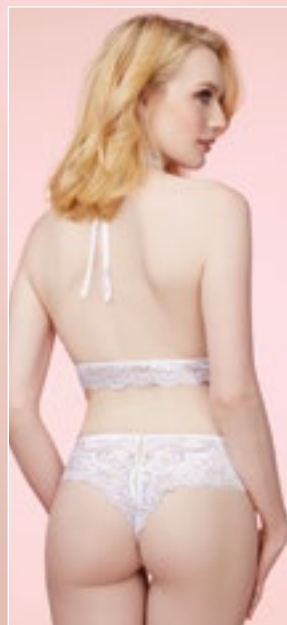
STYLE 11522 WHITE
O/S

• Stretch lace bralette & panty set High-neck halter styling with tie-back neck closure • Silver metal heart details • Matching open crotch panty



STYLE 10983 BLACK, WHITE/BLUE
S/M, M/L

• Stretch lace leg garter that functions as a wallet • 2 secret pockets • Pockets can fit a credit card & a large phone



STYLE 10583 WHITE
O/S

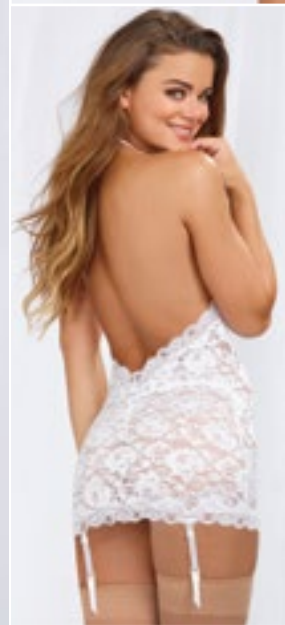
• Stretch, scalloped, galloon lace teddy • Plunging halter neckline • Fluttery chiffon ruffles at hip • Peek-a-boo back • Open crotch • Tie-neck closure and satin tie-back bow at waist





STYLE 9742 WHITE
O/S

- Stretch lace T-back chemise • Pearl strand accent, scalloped stretch lace trim edges • Ruched back detail and contrast satin bows • Matching lace thong included



STYLE 11024X WHITE
O/S QUEEN

- Stretch lace plunge front halter garter slip • Rhinestone collar detail • Sexy low back (*Plus size back slightly modified with higher back*) • Removable/adjustable garters • Matching G-string included • Shown with Style 0007 thigh highs; sold separately



STYLE 11024 WHITE
O/S



STYLE 8694X
BLACK, RED, WHITE
O/S QUEEN

- Stretch lace halter teddy • Plunging neckline • Adjustable halter ties • Large heart cut-out detail on back • Plus garment has been modified with a higher neckline



STYLE 8694
BLACK, RED, WHITE
O/S

- Stretch lace halter teddy • Plunging neckline • Adjustable halter ties • Large heart cut-out detail on back



STYLE 11061X
WHITE
O/S QUEEN

- Heart mesh and stretch lace babydoll • Underwire demi cups • Strappy pearl detail • Tie back halter • Open Crotch G-string with pearl back included



STYLE 11061
WHITE
O/S

- Heart mesh and stretch lace babydoll • Underwire demi cups • Strappy pearl detail • Tie back halter • Open Crotch G-string with pearl back included





STYLE 1429 WHITE

O/S

- Open-crotch panty • Large embroidered heart detail



STYLE 1442 WHITE

S, M, L, XL
1X, 2X, 3X

- Heart stretch lace panty • Open crotch • Heart cut-out detail



STYLE 1411 WHITE

S, M, L, XL

- Microfiber cheeky panty • Rhinestone "Bride" detail • Organza ruffle trim



STYLE 7177 BLACK, CORAL, HOT PINK, RUBY, SAPPHIRE, TURQUOISE, VINTAGE PINK, WHITE

S, M, L
1X/2X, 3X/4X

- Stretch lace cheeky boyshort • Open crotch • Satin bow details





STYLE 0074 BLACK, WHITE
O/S

- Floral stretch lace halter dress • Attached garters and lace thigh highs
- G-string not included



STYLE 8735 BLACK, RED, WHITE
O/S
O/S QUEEN

- Stretch lace garter belt • Scalloped hem • Hook & eye back closure
- Shown with Style 0005 thigh highs; sold separately • G-string not included



STYLE 0013 BLACK, WHITE
O/S
O/S QUEEN

- Sheer garter belt pantyhose • G-string not included





STYLE 0007 BLACK, NUDE, RED, WHITE

O/S

O/S QUEEN

• Sheer thigh highs with back seam • Shown with Style 8735 garter belt; sold separately • G-string not included



STYLE 0005 BLACK, NUDE, RED, WHITE

O/S

O/S QUEEN

• Sheer thigh highs with stay-up silicone lace top • Shown with Style 1376 thong; sold separately



STYLE 0002 BLACK, WHITE

O/S

O/S QUEEN

• Sheer thigh highs with lace top • Shown with Style 9382 garter belt ; sold separately • G-string not included



Dreamgirl

PACKAGED PANTIES
& garter belts





STYLE 1448 BLACK
S/M, L/XL

• High-waisted lace thong • Strappy lace styling



STYLE 1450 BLACK
S/M, L/XL

• Stretch lace panty • Open sides with elastic straps





STYLE 1452 BLACK

S, M, L, XL

- Microfiber g-string • Gunmetal color chainmail hip strap detail
- Adjustable back waist elastic



STYLE 1449 BLACK

S/M, L/XL

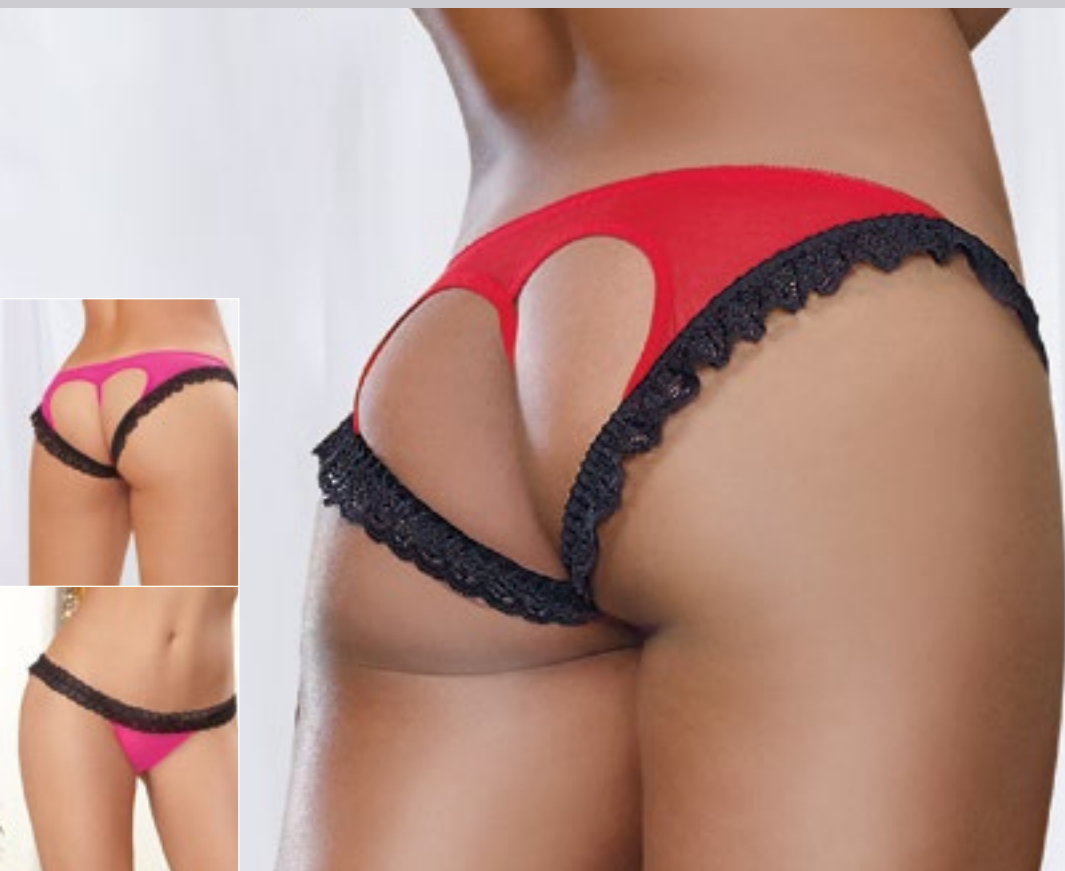
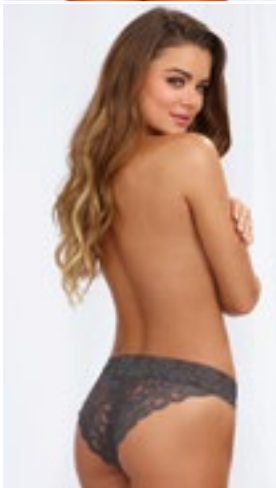
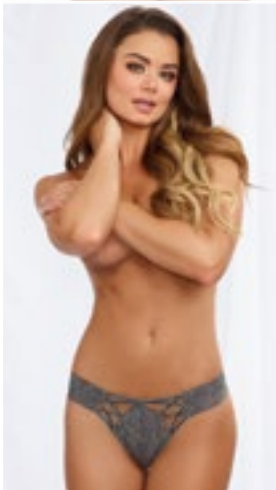
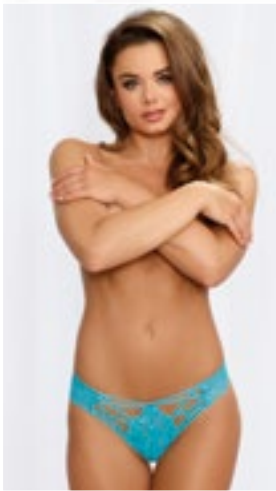
- Fishnet G-string • Wide elastic waistband





STYLE 1380 RED/BLACK
S, M, L, XL

• Microfiber cheeky panty • Cross-dye lace back • Satin bow trim



STYLE 1377 HOT PINK/BLACK, RED/BLACK
S, M, L, XL
1X/2X, 3X/4X

• Stretch mesh panty • Lace ruffle trim • Open-back heart detail.



STYLE 1435 BLACK, CORAL, SLATE, TURQUOISE
S, M, L, XL

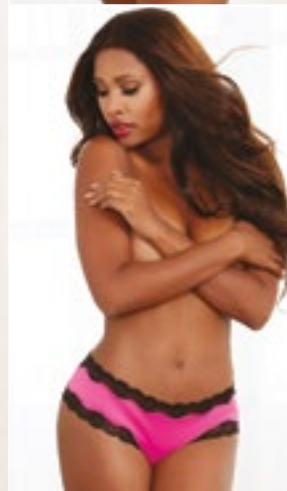
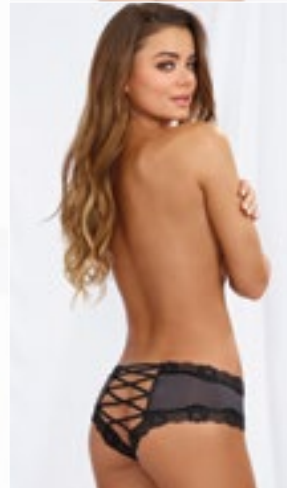
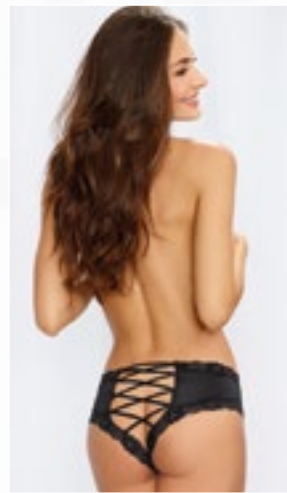
• Stretch lace panty with elastic criss-cross details





STYLE 1434 BLACK, HOT PINK/BLACK, IRIS/BLACK, SLATE/BLACK
S, M, L, XL
1X, 2X, 3X

- Microfiber cheeky panty • Stretch lace trim
- Elastic criss-cross open back detail



STYLE 1424 BLACK
S, M, L, XL

- Scalloped cross-dye lace and stretch mesh panty
- Strappy elastic back detail



STYLE 1412 BLACK
S/M, M/L

- Stretch lace tanga panty • Criss-cross strappy waistband detail





STYLE 1429 WHITE
O/S

- Open-crotch panty • Large embroidered heart detail



STYLE 1411 WHITE
S, M, L, XL

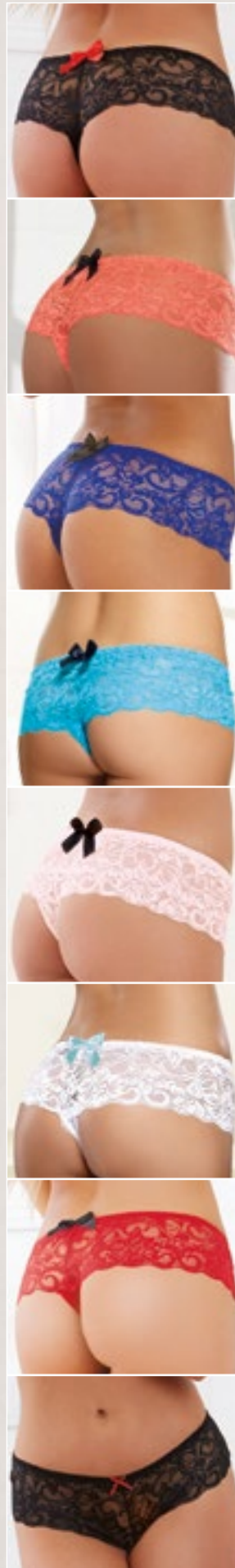
- Microfiber cheeky panty • Rhinestone "Bride" detail • Organza ruffle trim



STYLE 1442 WHITE
S, M, L, XL
1X, 2X, 3X

- Heart stretch lace panty • Open crotch • Heart cut-out detail





STYLE 7177 BLACK, CORAL, HOT PINK, RUBY, SAPPHIRE, TURQUOISE, VINTAGE PINK, WHITE

S, M, L
1X/2X, 3X/4X

• Delicate lace open-front gown • Scalloped lace trim • Long sleeves • Ribbon-tie front closure • Matching lace G-string included



STYLE 1326 BLACK

S, M, L
1X/2X, 3X/4X

• Stretch lace, open-crotch boyshort • Lace-up back detail



STYLE 1376 BLACK, RED, WHITE

O/S

• Stretch lace thong with stretch lace waistband





STYLE 1300 BLACK, HOT PINK, RED

S, M, L

1X/2X, 3X/4X

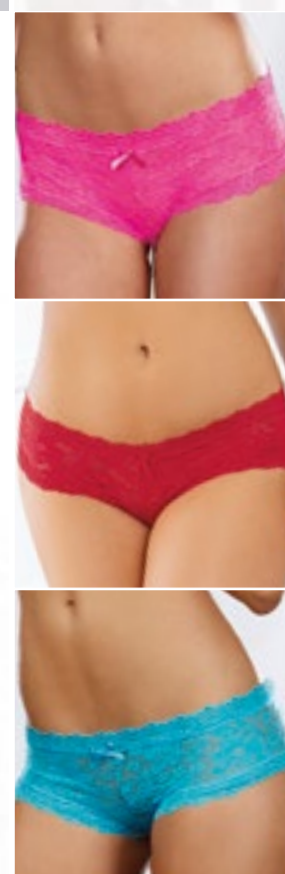
• Stretch lace, low-rise panty • Open crotch • Ruffled back detail



STYLE 1423 BLACK

S, M, L, XL

• Faux-leather, stretch knit cheeky panty • Functional zipper front • Stretch mesh back • Ruching detail.



STYLE 1375 BLACK, HOT PINK, RED, TURQUOISE

S, M, L, XL

• Stretch lace, cheeky hipster panty • Scalloped lace trim • Satin bow





STYLE 9382 BLACK

O/S
O/S QUEEN

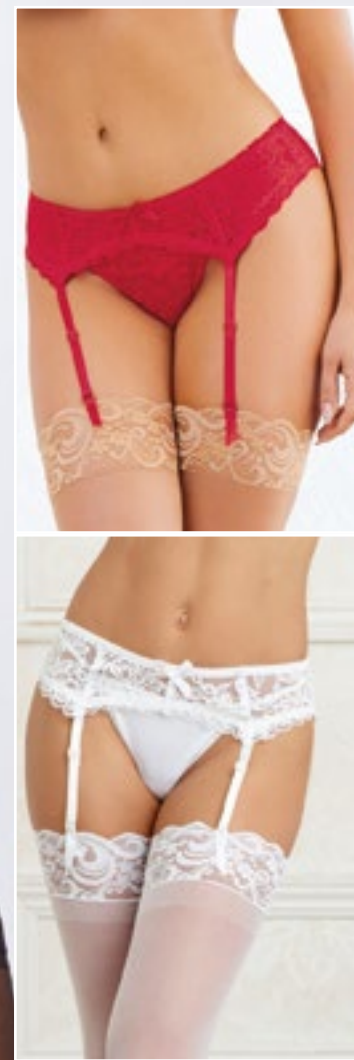
• Satin-front garter belt • Zig-zag topstitch detailing • Stretch mesh back • Adjustable garter straps • Hook & eye back closure • Shown with Style 0006 thigh highs; sold separately • G-string not included



STYLE 8735 BLACK, RED, WHITE

O/S
O/S QUEEN

• Stretch lace garter belt • Scalloped hem • Hook & eye back closure • Shown with Styles 1376 thong and 0005 thigh highs; sold separately



Dreamgirl
BLACK
diamond





STYLE 0317 BLACK

O/S

- Lace patterned knit two pc garter set with attached garters and stockings • Midriff length • Off the shoulder styling • Faux lace up





STYLE 0318 BLACK

O/S

• Lace patterned knit garter dress with faux lace-up and attached stockings • Attached lace collar with lace-up detail • Reversible, can be worn with lace-up in front or back • Thong not included

STYLE 0318X BLACK

O/S QUEEN





STYLE 0311 BLACK

O/S

• Snake-skin inspired fishnet teddy bodystocking • Adjustable halter snap closure • Thong back • Attached elastic garters and matching thigh high stockings • G-string not included







STYLE 0313 BLACK

O/S

• Opaque seamless teddy • High-neck styling with fixed shoulder straps • Front-to-back criss-cross details • Thong back • Includes matching criss-cross detail thigh high stockings





STYLE 0312 BLACK

O/S

- Opaque seamless teddy bodystocking • Neckline criss-cross details • Thong back with snap crotch • Attached elastic garters and matching thigh high stockings



STYLE 0312X BLACK

O/S QUEEN





STYLE 0310X BLACK
O/S QUEEN

• Fishnet teddy bodystocking • Adjustable halter neck ties and cold-shoulder styling • Attached 3/4 length sleeves • Thong back • Attached elastic garters and matching thigh high stockings • G-string not included



STYLE 0310 BLACK
O/S







STYLE 0319X BLACK
O/S QUEEN

- Fishnet body stocking with attached collar with snap closure • Off the shoulder styling • Open crotch • Thong not included



STYLE 0319 BLACK
O/S





STYLE 0315 BLACK

O/S

- Fishnet bodystocking • Plunging halter neckline with adjustable tie back closures • Low, open back • Open crotch • G-string not included



STYLE 0315X BLACK

O/S QUEEN





STYLE 0309 BLACK
O/S

- Fishnet bodystocking • High-neck styling • Open crotch • G-string not included



STYLE 0321 BLACK
O/S
O/S QUEEN

- Sheer thigh high stockings • Striped elastic top • Thong not included



STYLE 0320 BLACK
O/S

- Fishnet thigh high stockings • Strappy elastic top detail with metal studs • G-string not included



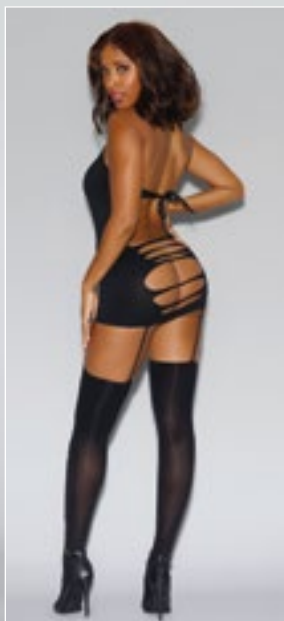
Dreamgirl
MOST LOVED
black diamond





STYLE 0233 BLACK
O/S

- Seamless opaque halter garter dress • Front and back slash details
- Tie closures • Attached slash-front thigh highs • G-string not included



STYLE 0102 BLACK
O/S

- Opaque fence-net garter dress • Attached thigh highs • G-string not included



STYLE 0187 BLACK/FUCHSIA
O/S

- Stretch lace halter garter dress • Ruffled lace accents • Faux lace-up front detail • Adjustable neck ties • Attached thigh highs



STYLE 0290

BLACK

O/S

- Two-piece set • Swirl-patterned lace and fishnet garter dress • High-waist garter skirt • Attached neck collar • Attached thigh highs • Separate bralette has adjustable shoulder straps and tie-back closure • G-string not included



STYLE 0290X

BLACK

O/S QUEEN

- Two-piece set • Swirl-patterned lace and fishnet garter dress • High-waist garter skirt • Attached neck collar • Attached thigh highs • Separate bralette has adjustable shoulder straps and tie-back closure • G-string not included



STYLE 0299

BLACK

O/S

- Fishnet lace bustier-style bodystocking • Criss-cross halter straps • Snap closure at neck • Attached thigh highs with criss cross garters • G-string not included



STYLE 0299X

BLACK

O/S QUEEN

- Fishnet lace bustier-style bodystocking • Criss-cross halter straps • Snap closure at neck • Attached thigh highs with criss cross garters • G-string not included





STYLE 0287 BLACK
O/S

- Fishnet and knitted lace garter dress • Plunging keyhole neckline • Waistband detail • Open back with tie closure • Attached thigh-highs • G-string not included



STYLE 0097 BLACK
O/S

- Fishnet garter dress • Lace hem • Keyhole neck • Attached thigh-highs • G-string not included



STYLE 0258 BLACK
O/S

- Stretch lace garter dress • Adjustable halter ties • Low open back • Peek-a-boo detail • Attached thigh-highs • G-string not included



STYLE 0144

BLACK

O/S

- Sheer, stretch lace garter dress
- Lace-trimmed straps • Satin ribbon lace-up back detail
- Attached thigh highs • G-string not included



STYLE 0144X

BLACK

O/S QUEEN

- Sheer, stretch lace garter dress
- Lace-trimmed straps • Satin ribbon lace-up back detail • Attached thigh highs • G-string not included



STYLE 0074

BLACK, WHITE

O/S

- Floral stretch lace garter dress • Halter neckline • Attached thigh highs • G-string not included



STYLE 0074X

BLACK

O/S QUEEN

- Floral stretch lace garter dress • Halter neckline • Attached thigh highs • G-string not included





STYLE 0035X

BLACK, RED

O/S QUEEN

- Semi-sheer halter garter dress • Snap neck closure • Stretch lace trim
- Attached garters and matching thigh highs • G-string not included

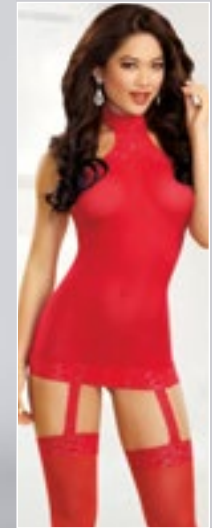


STYLE 0035

BLACK, RED

O/S

- Semi-sheer halter garter dress • Snap neck closure • Stretch lace trim
- Attached garters and matching thigh highs • G-string not included



STYLE 0145X

BLACK

O/S QUEEN

- Lace fishnet halter garter dress • Opaque bodice style lines • Adjustable halter ties • Attached thigh highs • G-string not included

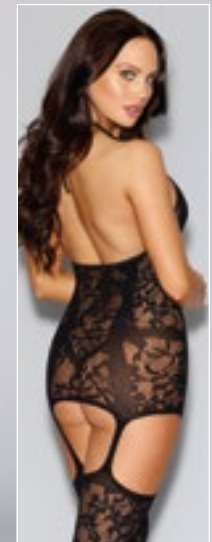


STYLE 0145

BLACK

O/S

- Lace fishnet halter garter dress • Opaque bodice style lines • Adjustable halter ties • Attached thigh highs • G-string not included





STYLE 0294 BLACK
O/S

- Seamless bodystocking with opaque criss-cross bralette and panty
- Snap crotch
- Fence net center detail
- Attached criss-cross garters
- Semi-sheer thigh highs



STYLE 0212 BLACK
O/S

- Sheer halter teddy bodystocking with opaque knitted bra & panty
- Criss-cross detail
- Snap collar closure
- Snap crotch
- Attached thigh highs
- Criss-cross garters



STYLE 0291 BLACK
O/S

- Two-piece set
- Fishnet bodystocking
- Open crotch
- Tie-back halter neckline
- Separate elastic body harness with O-ring details
- G-string not included





STYLE 0296 BLACK
O/S

- Fishnet lace teddy bodystocking • Strapless neckline • Attached lace collar with snap closure • Strappy back detail • Thong back • Attached thigh highs



STYLE 0031 BLACK
O/S

- Sheer suspender tank bodystocking • G-string not included



STYLE 0295 BLACK
O/S

- Lace-trimmed fishnet teddy bodystocking with attached collar • Adjustable shoulder straps • Open cups • Thong back • Thigh highs with attached side garters • Seam-back detail • G-string not included





STYLE 0245 BLACK
O/S

- Sheer two-way garment • Scalloped lace detail • Can be worn as a strapless open-crotch bodystocking or upside-down as a long-sleeved dress • G-string not included



STYLE 0128 BLACK
O/S

- Sheer halter bodystocking • Lace-trimmed v-back • Center thigh seam with satin bow



STYLE 0268 BLACK
O/S

- Open-cup bodystocking with knitted lace "teddy" design • Fishnet legs • Open crotch • Adjustable halter ties • Pasties and G-string not included





STYLE 0015X
BLACK, NEON PINK
O/S QUEEN

- Long-sleeved fishnet bodystocking with open crotch • G-string not included



STYLE 0015
BLACK, NEON PINK
O/S

- Long-sleeved fishnet bodystocking with open crotch • G-string not included



STYLE 0079
BLACK
O/S

- Diamond-net halter bodystocking • Open crotch • G-string not included



STYLE 0017
BLACK
O/S

- Seamless fishnet bodystocking • Halter neck • Open crotch • Low back • G-string not included



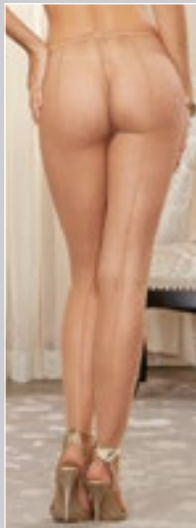
STYLE 0011

BLACK, NUDE

O/S

O/S QUEEN

- Fishnet pantyhose • Back seam • G-string not included



STYLE 0257H

BLACK, NUDE, RED, WHITE

O/S

O/S QUEEN

- Fishnet pantyhose • Solid foot for added comfort • One piece set



STYLE 0082

BLACK

O/S

O/S QUEEN

- Sheer, open-crotch pantyhose • G-string not included



STYLE 0010

BLACK

O/S

- Fence net pantyhose • G-string not included





STYLE 0013 BLACK, WHITE

O/S

O/S QUEEN

- Sheer garter belt pantyhose • G-string not included



STYLE 0250 BLACK

O/S

- Semi-opaque suspender pantyhose • G-string not included



STYLE 0271 BLACK

O/S

- Sheer garter-belt-style pantyhose • Lace trimmed thigh highs • Back seam to calf • Satin bow detail • G-string not included



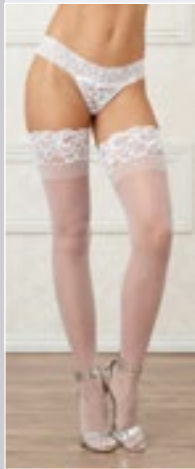
STYLE 0005

BLACK, NUDE, RED, WHITE

O/S

O/S QUEEN

• Sheer thigh highs • Stay-up silicone lace top • Shown with Style 1376 thong; sold separately



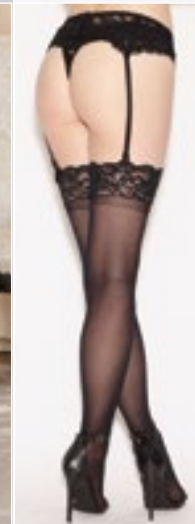
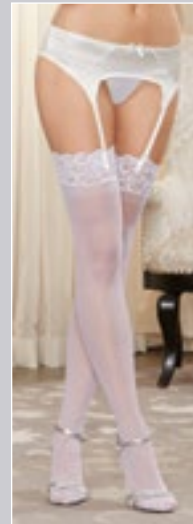
STYLE 0002

BLACK, WHITE

O/S

O/S QUEEN

• Sheer thigh highs with lace top • Shown with Style 9382 garter belt; sold separately • G-string not included



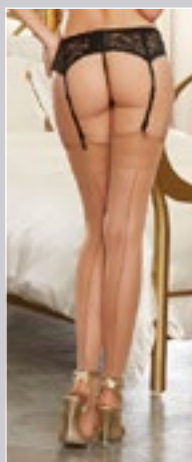
STYLE 0007

BLACK, NUDE, RED, WHITE

O/S

O/S QUEEN

• Sheer thigh highs with back seam • Shown with Style 9382 garter belt; sold separately • G-string not included



STYLE 0081

BLACK

O/S

• Sheer thigh highs • Stay-up silicone lace top • Back seam with bow detail at calf • Shown with Style 1376 thong; sold separately





STYLE 0006

BLACK, RED

O/S

O/S QUEEN

- Fishnet thigh highs with lace top
- Shown with Style 9382 garter belt; sold separately
- G-string not included



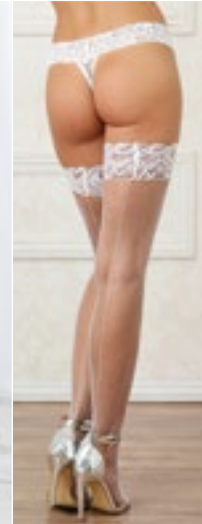
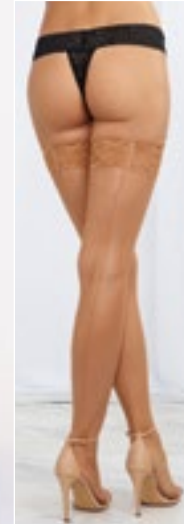
STYLE 0001

BLACK, NUDE, WHITE

O/S

O/S QUEEN

- Fishnet thigh highs with back seam
- Stay-up silicone lace top
- Shown with Style 1376 thong; sold separately



STYLE 0005N

NEON PINK

O/S

O/S QUEEN

- Sheer thigh highs
- Stay-up silicone lace top
- Shown with Style 7177 panty; sold separately



STYLE 0001N

HOT PINK

O/S

O/S QUEEN

- Neon fishnet thigh highs with back seam
- Stay-up silicone lace top
- Shown with Style 7177 thong; sold separately



